

1

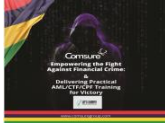
MEET THE TRAINER
Mathew Beale



CHAIRMAN AML/CTF
REGULATORY SERVICES
CMSURE GROUP OF COMPANIES



WELCOME AND THANK YOU



2

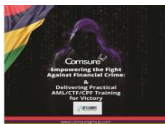
MEET THE TRAINER
Mathew Beale



CHAIRMAN AML/CTF
REGULATORY SERVICES
CMSURE GROUP OF COMPANIES



HOUSEKEEPING



3

HOUSKEEPING



- FIREARM
- MOBILE PHONES
- COMFORT BREAKS
- REFRESHMENT BREAKS
- SPEAKER QUESTIONS
- TIMINGS & TIMELINESS

4

09:00 - 09:15	Introduction	Matthew Beale	
09:15 - 10:00	Trends and Statistics in Regulatory Crime and Lessons Learnt	Teresocha Boykin, ACTING MANAGER AMU/CCT - Wellington Trade Renu Asati, Director of Supervision at the Financial Services Commission (FSC).	The Importance of Public-Private Partnerships International efforts to combat the implementation of reform Integration of Financial Risk Information, and other information International Cooperation used to combat financial crime through the seizure and confiscation of assets. What have been the lessons learned?
10:00 - 10:30			
10:30 - 11:15	Cybersecurity measures for financial institutions and Role of Technology in Anti-Money Laundering (AML) Compliance	Associate Professor (Dr) Shweta Arrogom Co-Director & CEO, Mission Group	Handling the Future: Are you the next big in your cybersecurity?
11:15 - 12:30	Compliance challenges and emerging trends.	Ushaama Dasbharay Co-Founder & Partner, Law Galaxy Chambers	The recent changes to the Mauritius AML/CFT Framework: Constraints or Enablers?
12:30 - 13:30	LUNCH		
13:30 - 14:15	Blockchain and cryptocurrency challenges and solutions and Future Trends and Innovation in Financial Crime.	Jessica Hagg Co-Director & CEO, Mission Group	Can a regulated financial asset cryptocurrency join with off-shore Member State Business sector?
14:15 - 15:15	Regulatory Framework and Compliance Obligations. The role of financial intelligence units (FIUs) in combating financial crime.	Pavani Kumar Choonooking Services Director, Mauritius LLP Rajiv Chhabra Co-Founder & CEO, Law Galaxy Chambers & Compliance Consultancy Ltd	The intimate legal framework in Mauritius in combating financial crime. The new functions of the Compliance Division within the FSC.
15:15 - 15:30			
15:30 - 16:45	Risk-Based Approach to AML Compliance Understanding risk assessment methodologies Mitigating High-Risk Factors in Customer Onboarding and Transaction Monitoring.	Matthew Beale Director, Compliance Group of Companies Sanjana Kisoondharary Head of Compliance Division Ulrika D. Skolder-Barnaby Chief Compliance Officer / Policy Management Ltd	Risk Rating Risk-Based Approach, beyond the Compliance High-Risk Variables: Choosing the High-Risk Variables within Customer Onboarding
16:45 - 17:00	Enforce	Matthew Beale Director of Compliance	SUMMARY OF THE DAY AND LINK TO THE NEXT DAY'S PRESENTATION



10:00 – 10:30

12:30 – 13:30

15:15 – 15:30

5

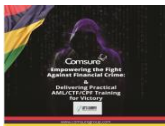
MEET THE TRAINER
Matthew Beale



MANAGING DIRECTOR
COMPLIANCE GROUP OF COMPANIES



TODAY'S SPEAKERS



6



TODAY'S SPEAKERS




Renu AUDIT
DIRECTOR OF SUPERVISION




Teenoocha BOYJOO
ACTING MANAGER, AML/CFT DIRECTORATE

 Mathew Beale CHAIRMAN OF THE BOARD FINANCIAL SERVICES COMMISSION MAURITIUS	 Dipty Gajadur DIRECTOR GENERAL OF SECURITIES FINANCIAL SERVICES COMMISSION MAURITIUS	 Dr. Sheeba Armoogum ASSOCIATE PROFESSOR IN CYBERSECURITY INVESTMENT AND FINANCE UNIVERSITY OF TECHNOLOGY MAURITIUS	 Jessica Naga MANAGING & CEO FINANCIAL INTEGRITY & COMPLIANCE SERVICES
 Pawan Kumar Choosneeking MANAGING DIRECTOR FINANCIAL INTEGRITY & COMPLIANCE SERVICES	 Uttara D. Boodan CHIEF COMPLIANCE OFFICER ALCOHOL MANAGEMENT SERVICES	 Sanjana Kisoondharry HEAD OF COMPLIANCE SERVICES	 Usaama Dauharry CIVIL FOUNDER & MANAGER LAW COUNTRY COMMERCE

7



MEET THE TRAINER

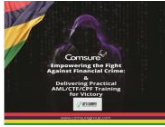
Mathew Beale



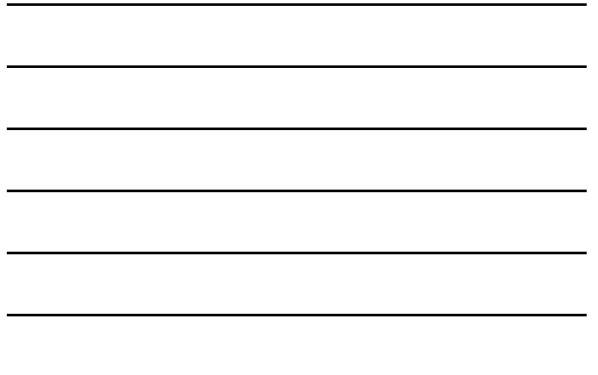
MANAGING DIRECTOR
FINANCIAL INTEGRITY & COMPLIANCE
SERVICES



YOUR SLIDES



8



www.cmsure.com/news




 [Home](#) | [About](#) | [Training](#) | [Consultancy](#)

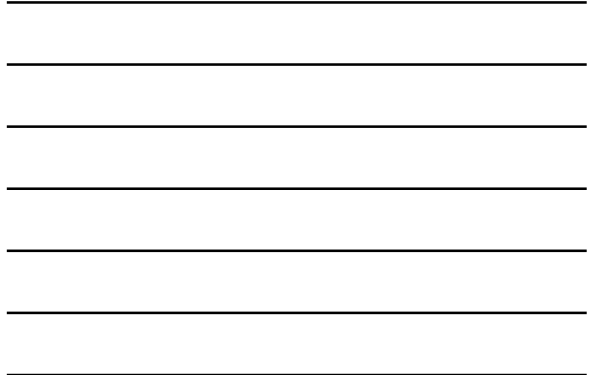
Mauritius 2024 Conference Pack

30/08/2024

Cmsure's 6th Mauritius Conference pack is below

- 09:00 - Mathew Beale
• Introduction
- 09:15 - Ms Renu Audit & Teenoocha Boyjoo
• Regulatory updates Post FATF exit
• Slides 
- 10:45 - Dr. Sheeba Armoogum
• Hacking the Human: Are you the weakest link in your Cybersecurity?
• Slides
- 11:30 - Usaama Dauharry
• The recent changes to the Mauritian AML, CFT Framework: Guardians or Roadblocks?
• Slides
- 12:30 - Jessica Naga
• Can a regulated virtual asset ecosystem help to spin-off a Mauritian Global Business sector 2.0?
• Slides
- 14:15 - Pawan Kumar Choosneeking
• Regulatory Framework and Compliance obligations
• Slides
- 14:55 - Dipty Gajadur
• Key international regulatory bodies and the role of financial intelligence units (FIUs) in combatting financial crime
• Slides
- 15:30 - Mathew Beale

9



www.comsure.com/news



+44 (0) 1534 626830

Home | About | Training | Consultancy | Services | News | Contact

Mauritius 2024 Conference Pack

30/08/2024

Read more >



Comsure Mauritius 2024 conference update – FSC added another speaker to the programme.

23/08/2024

Read more >

Latest News

Keep up to date with the very latest news from Comsure

FIND OUT MORE

Gallery

View our latest imagery from our news and work

10

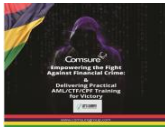
MEET THE TRAINER Mathew Beale



MANAGING DIRECTOR
COMSURE GROUP OF COMPANIES

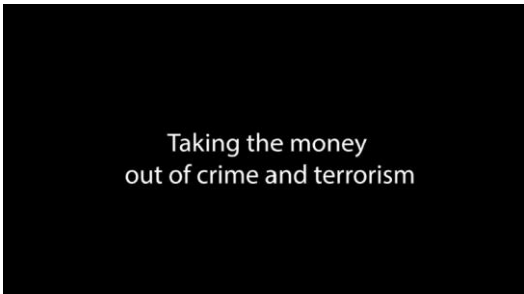


MATHEW'S OPENING THOUGHTS



11

OPENING VIDEO



12

OPENING REMARKS



- Comsure's 6th pivotal conference is where we unite to tackle the pressing issue of financial crime, a challenge that knows no borders and spares no economy.
- Today, we stand together to assess and enhance the effectiveness of our strategies in combating illicit financial activities that threaten the integrity of our financial systems.
- We will delve into innovative approaches, share best practices, and critically evaluate our current frameworks to ensure they are robust enough to deter, detect, and disrupt financial crime.

13

OPENING REMARKS



- Our collective efforts and commitment to continuous improvement are crucial in safeguarding our economies and maintaining public trust in our financial institutions.
- Let us use this platform to foster collaboration, exchange expertise, and reinforce our resolve to create a financial environment that is transparent, accountable, and resistant to criminal exploitation.

14

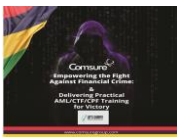
TODAY'S FIRST SPEAKERS



Renu AUDIT
DIRECTOR OF SUPERVISION



Teenoosha BOYJOO
ACTING MANAGER, AML/CFT DIRECTORATE



15